



## **Shaping AI-First Statistical Organizations**

*By Davide Roznowicz and Simone Roznowicz*

[founders@inlook.ai](mailto:founders@inlook.ai)

# Two user profiles: how they search and engage



## «Explorators»

Curious and flexible, they **search broadly**, refining their queries as they explore and learn.



## «Investigators»

They know precisely what they need and craft **highly detailed, specific queries** to find it.

# Two user profiles: how they search and engage



## «Explorators»

Curious and flexible, they search broadly, refining their queries as they explore and learn.



**Most users first explore and, if they find relevant results, they start investigating more and more.**



## «Investigators»

They know precisely what they need and craft highly detailed, specific queries to find it.

# The problems of standard chatbots

1

They **CAN'T PROVIDE 100% TRUSTED DATA**: the chatbot reprocesses the data to provide a textual output, which can lead to errors.



**RELIABILITY  
ISSUE!**

# The problems of standard chatbots

1

They **CAN'T PROVIDE 100% TRUSTED DATA**: the chatbot reprocesses the data to provide a textual output, which can lead to errors.

2

User attention span is very limited and chatbots **OFTEN REQUIRE SEVERAL INTERACTIONS** before the «Explorator» user finds the desired answer.

3

Chatbots rely solely on text and **LACK A PROPER VISUALIZATION INTERFACE**.



**RELIABILITY  
ISSUE!**



**USABILITY  
ISSUES!**



## **WHAT?**

inlook.ai is the ai infrastructure for statistical data, which starts from blending Search & Visualization for instant and seamless access to data.

## **HOW?**

Type a query in the search bar and get an interactive chart, table, and source for the desired trend in seconds

# The guarantees of inlook.ai platform

**DATA IS 100% CORRECT:** AI helps in the search and user experience but it never modifies the data



**100%  
RELIABLE**

# The guarantees of inlook.ai platform

**DATA IS 100% CORRECT:** AI helps in the search and user experience but it never modifies the data



**100%  
RELIABLE**

**EQUALLY ADDRESSES «EXPORATOR» AND «INVESTIGATOR» USERS:** there are no assumptions on how users formulate their queries.



**ENHANCED  
USABILITY**

It is **VISUAL FIRST AND MULTILINGUAL DESIGNED TO BE EXTREMELY EASY TO USE** even for non-technical people



# What OECD was looking for?



High  $\frac{\text{Quality}}{\text{Cost}}$  search

NO misinformation!

**Public use + Internal use**

# OECD → The Conversational Data Explorer

**Link Demo:** [inlook-demo](#)

# What did we do for internal use?



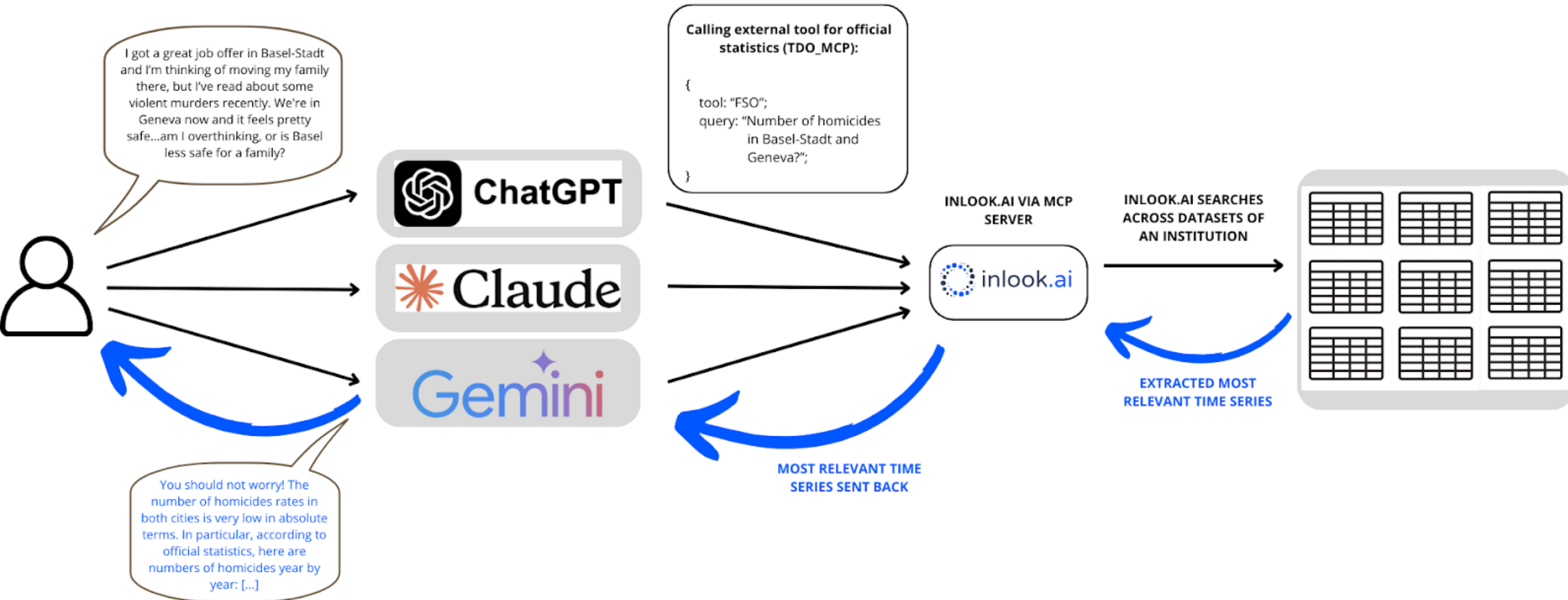
High  $\frac{\text{Quality}}{\text{Cost}}$  search

NO misinformation!

Public use + **Internal use**

# MCP + inlook for internal use

## USER CONVERSATION EXAMPLE - OFFICIAL STATISTICS INTEGRATED WITH CHATGPT



**This is a broader problem  
than we think...**

**People search for statistics on  
Google or ChatGPT**

**Which don't have access to official  
statistical datasets**

**So they make up numbers...**

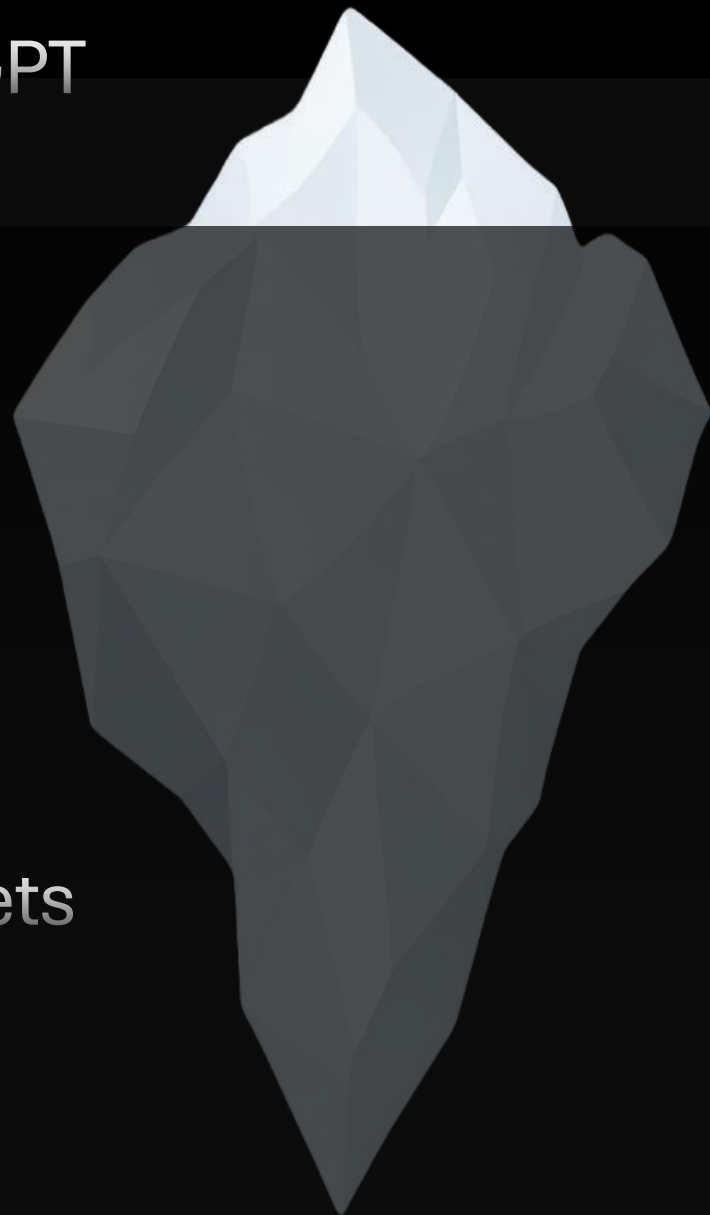


**Or they avoid answering...**

**Or they refer to articles**

# Statistics visible by ChatGPT

(through articles, blogs, web pages...)



Invisible Statistical Datasets

# Claude



How many homicides are committed every year in the swiss canton of Basel?

Pondered Swiss crime stats, advised consulting official sources.



5s

I don't have access to current specific statistics about homicides in the Swiss canton of Basel. Switzerland generally has one of the lowest homicide rates in Europe, with the national rate typically below 1 per 100,000 inhabitants, but I cannot provide specific annual numbers for Basel canton.

For accurate and up-to-date information on homicides in Basel, you would need to consult:

1. The Swiss Federal Statistical Office (Bundesamt für Statistik) website
2. Basel-Stadt cantonal police annual crime reports
3. Swiss national crime statistics with cantonal breakdowns

While you shared code that interfaces with Swiss Federal Statistical datasets earlier, I can't execute that code to retrieve the actual data.

   Riprova



Claude può commettere errori. Verifica sempre le risposte con attenzione.

Rispondi a Claude...



Claude 3.7 Sonnet



# ChatGPT

(with Web Search)

how many homicides are committed every year in the swiss canton of Basel?

”

Specific data on the annual number of homicides in the Swiss cantons of Basel-Stadt and Basel-Landschaft are not readily available in the provided sources. However, Switzerland maintains a low national homicide rate. According to the OECD, the country's homicide rate is 0.3 per 100,000 inhabitants, significantly lower than the OECD average of 2.6. This equates to approximately 45 homicides annually nationwide.

SwissCommunity

The Local Switzerland

While Basel-Stadt has reported higher overall crime rates, particularly in violent and property crimes, this does not necessarily indicate a higher number of homicides. The national homicide rate remains low, and specific figures for Basel-Stadt and Basel-Landschaft are not detailed in the available information. Le News

ch Fonti



Fai una domanda



Cerca



Avvia il ragionamento



# DeepSeek

(with Web Search)

## Homicide Statistics in Basel Canton Inquiry

Can you tell me how many homicides are committed every year in the swiss canton of Basel?



Found 49 results >

The search results provided do not contain specific data on the number of homicides committed annually in the Swiss canton of Basel. The available information focuses primarily on homicide rates and trends in Brazil and some other Latin American and Caribbean countries <sup>1</sup> <sup>4</sup> <sup>5</sup>.

For accurate and up-to-date statistics on homicides in Basel, Switzerland, I would recommend checking official sources such as:

1. The Swiss Federal Statistical Office ([www.bfs.admin.ch](http://www.bfs.admin.ch))
2. Basel Canton's police department or statistical office
3. Recent annual crime reports from Basel authorities

Switzerland generally has much lower homicide rates than the countries discussed in the search results. If you need help finding these Swiss-specific sources, I can provide guidance on where to look or how to interpret the data once you locate it.

This response is AI-generated, for reference only.



Message DeepSeek

DeepThink (R1)

Search



AI-generated, for reference only

Our Search Engine  
+  
MCP protocol



Link Demo: Claude+MCP+inlook



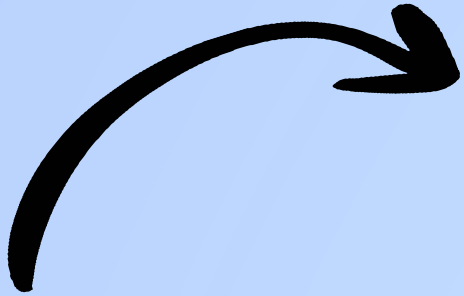
**Can we make it work for everyone?**

The AI-First Org → The future is here

# The AI-First Org → The ILO priorities



International  
Labour  
Organization

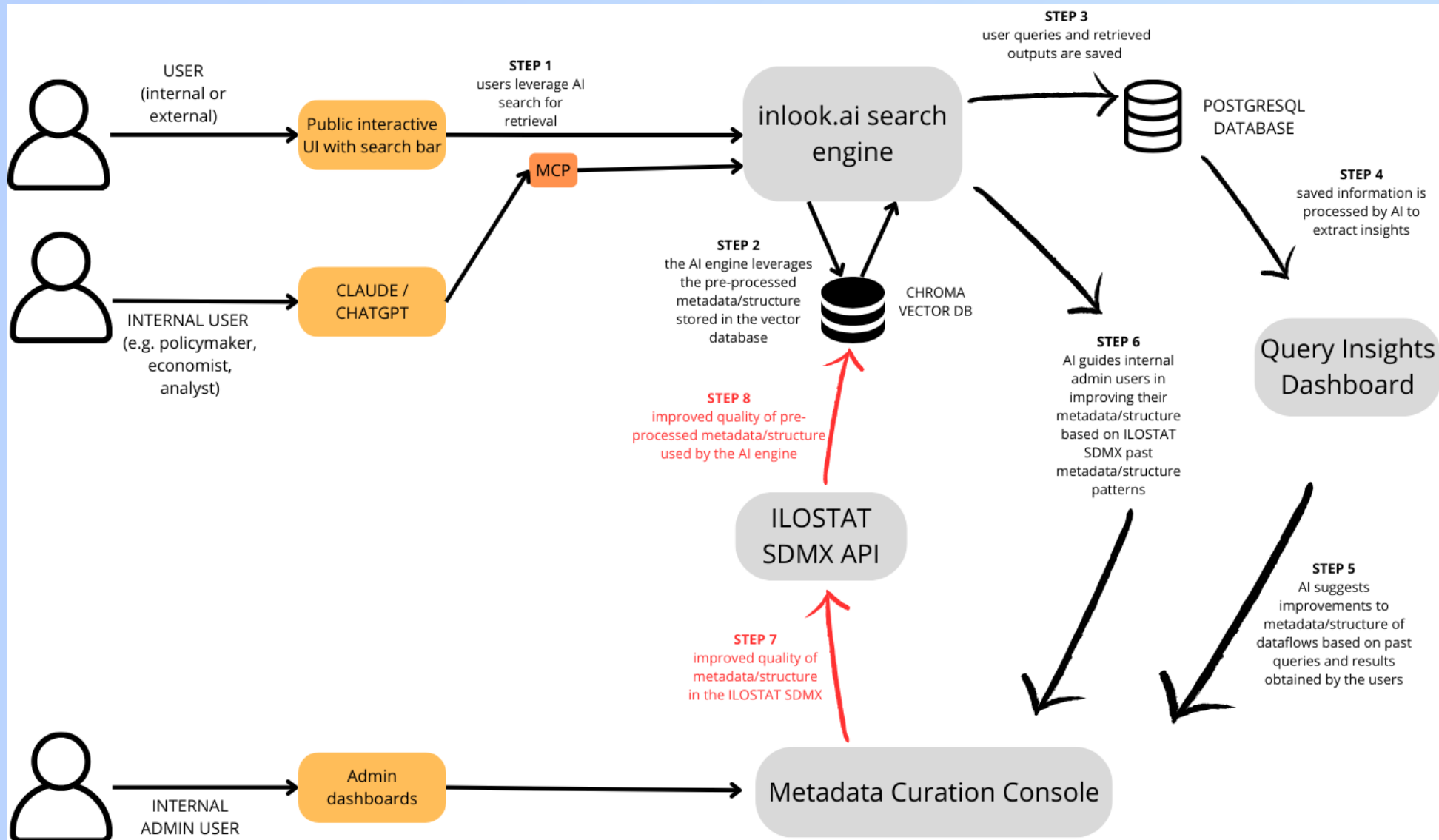


Improve SDMX  
metadata modelling



**Internal** use + **Public** use

# The AI-First Org → Detailed architecture



# The AI-First Org → The life cycle

AI SEARCH  
&  
MCP



# The AI-First Org → The life cycle

**AI SEARCH  
&  
MCP**



**WHO searches,  
WHAT they search,  
HOW they search,  
WHY they (don't) find**

# The AI-First Org → The life cycle

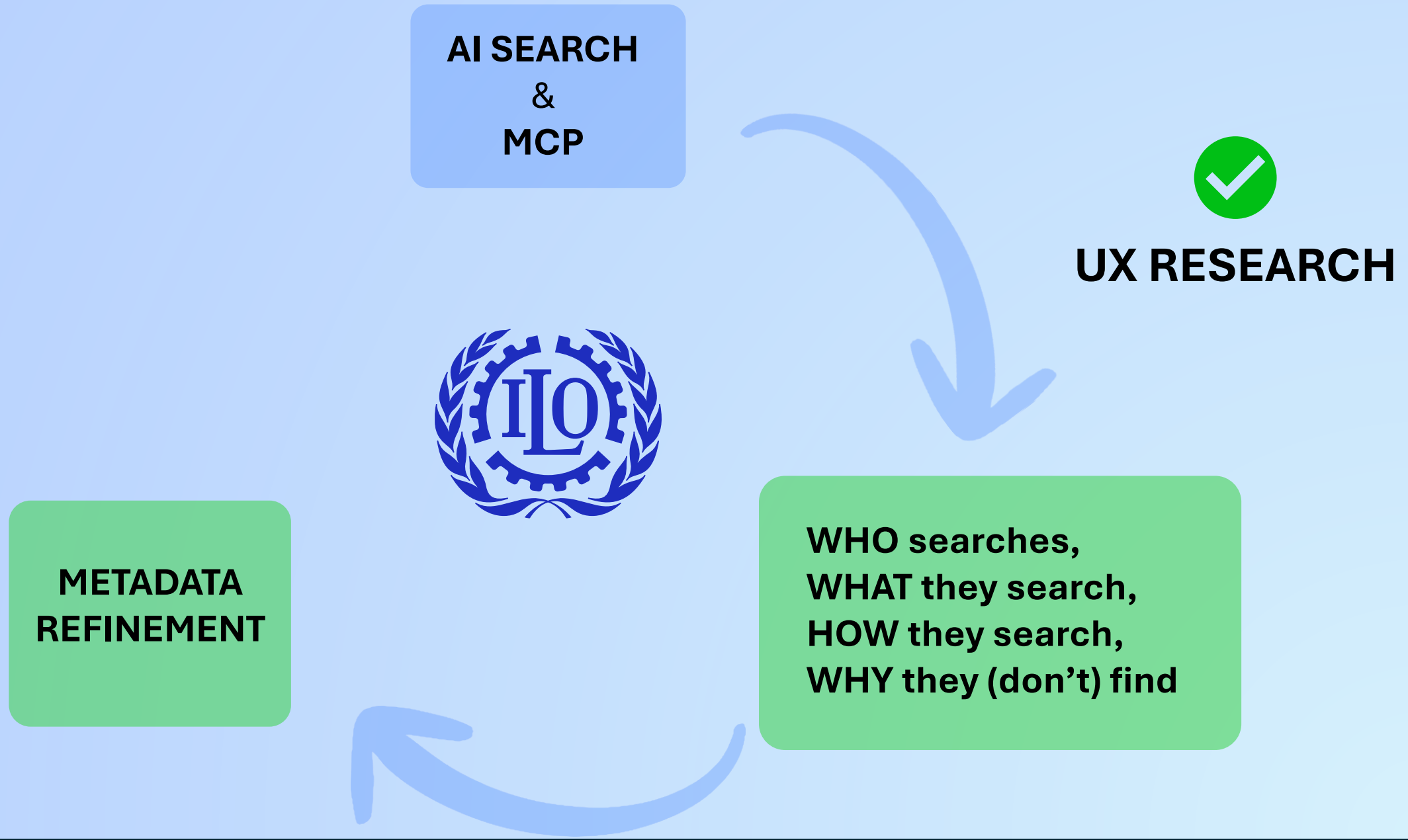
**AI SEARCH  
&  
MCP**



**UX RESEARCH**

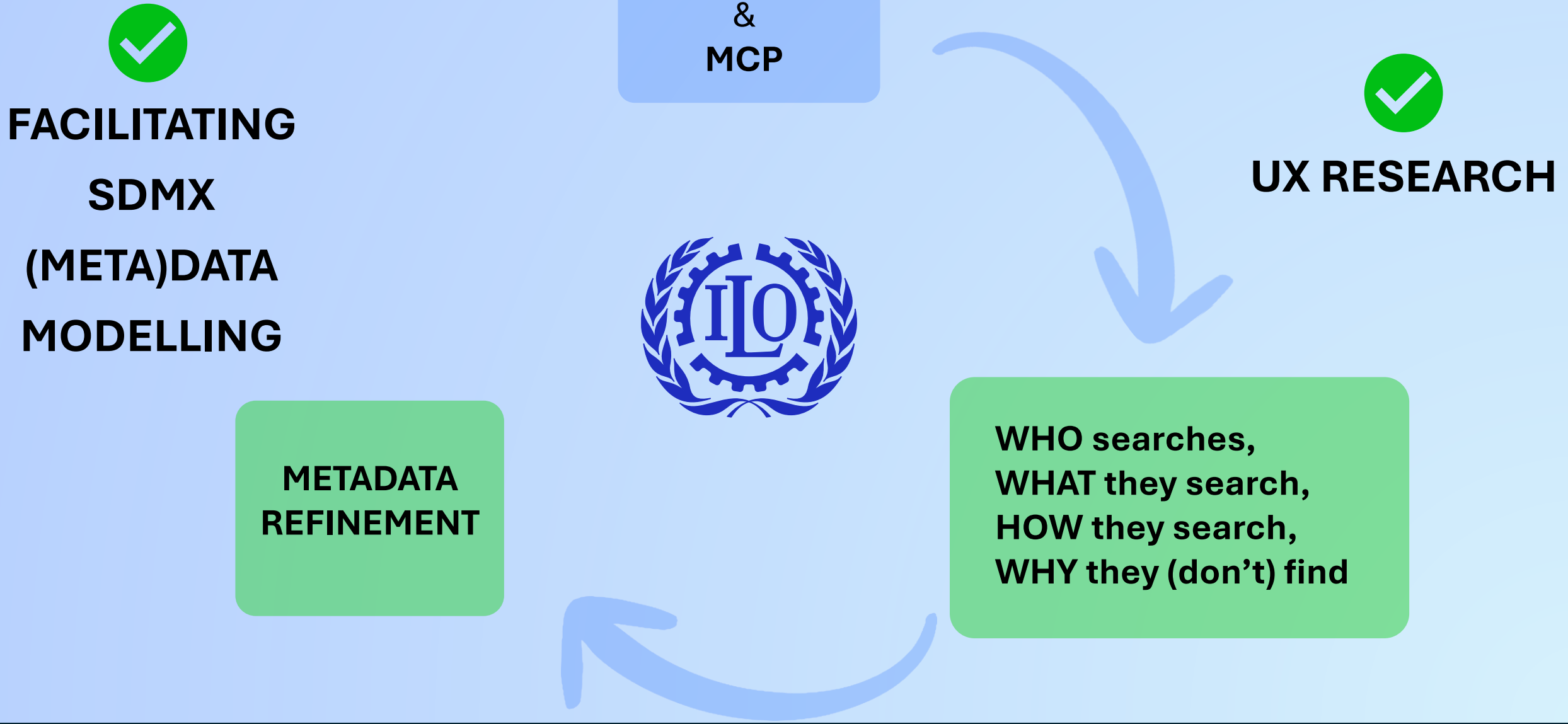
**WHO searches,  
WHAT they search,  
HOW they search,  
WHY they (don't) find**

# The AI-First Org → The life cycle





# The AI-First Org → The life cycle



# The AI-First Org → The life cycle



**IMPROVED  
AI READINESS!**

**AI SEARCH  
&  
MCP**



**METADATA  
REFINEMENT**

**WHO searches,  
WHAT they search,  
HOW they search,  
WHY they (don't) find**





## **Shaping AI-First Statistical Organizations**

*By Davide Roznowicz and Simone Roznowicz*

[founders@inlook.ai](mailto:founders@inlook.ai)